

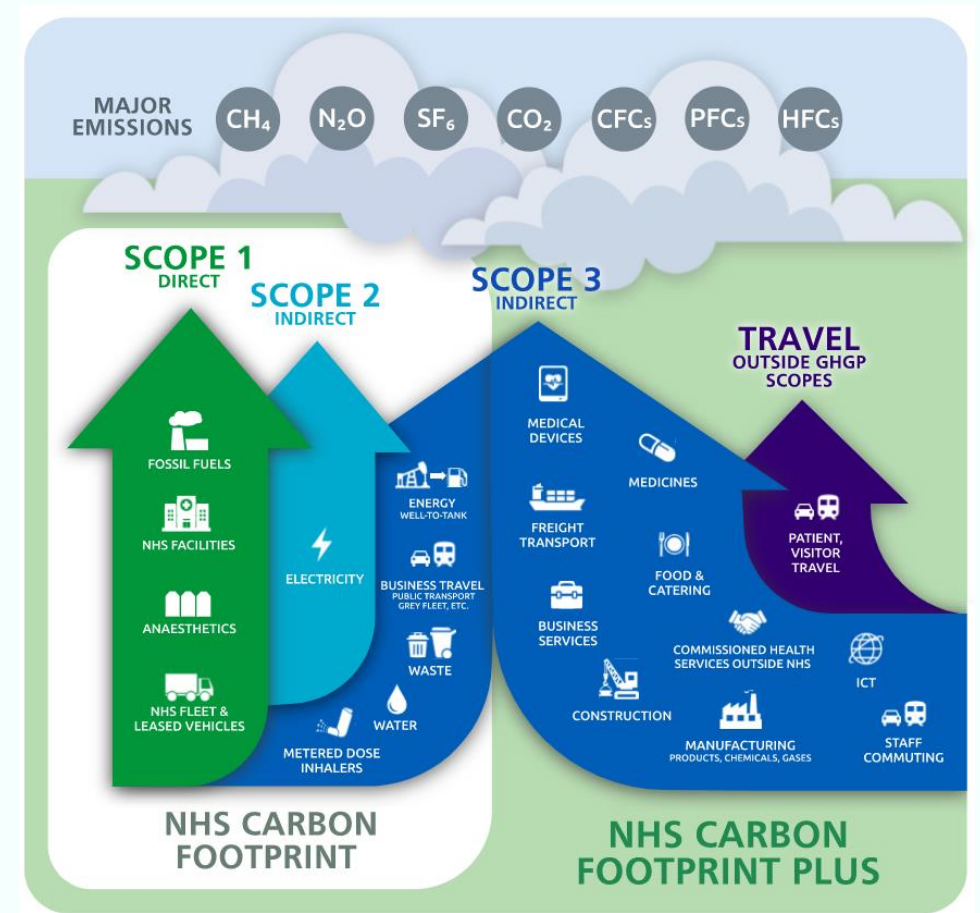
Centralisation, Circularity & Sustainability at NHS Leeds Teaching Hospitals



Climate Change & the NHS

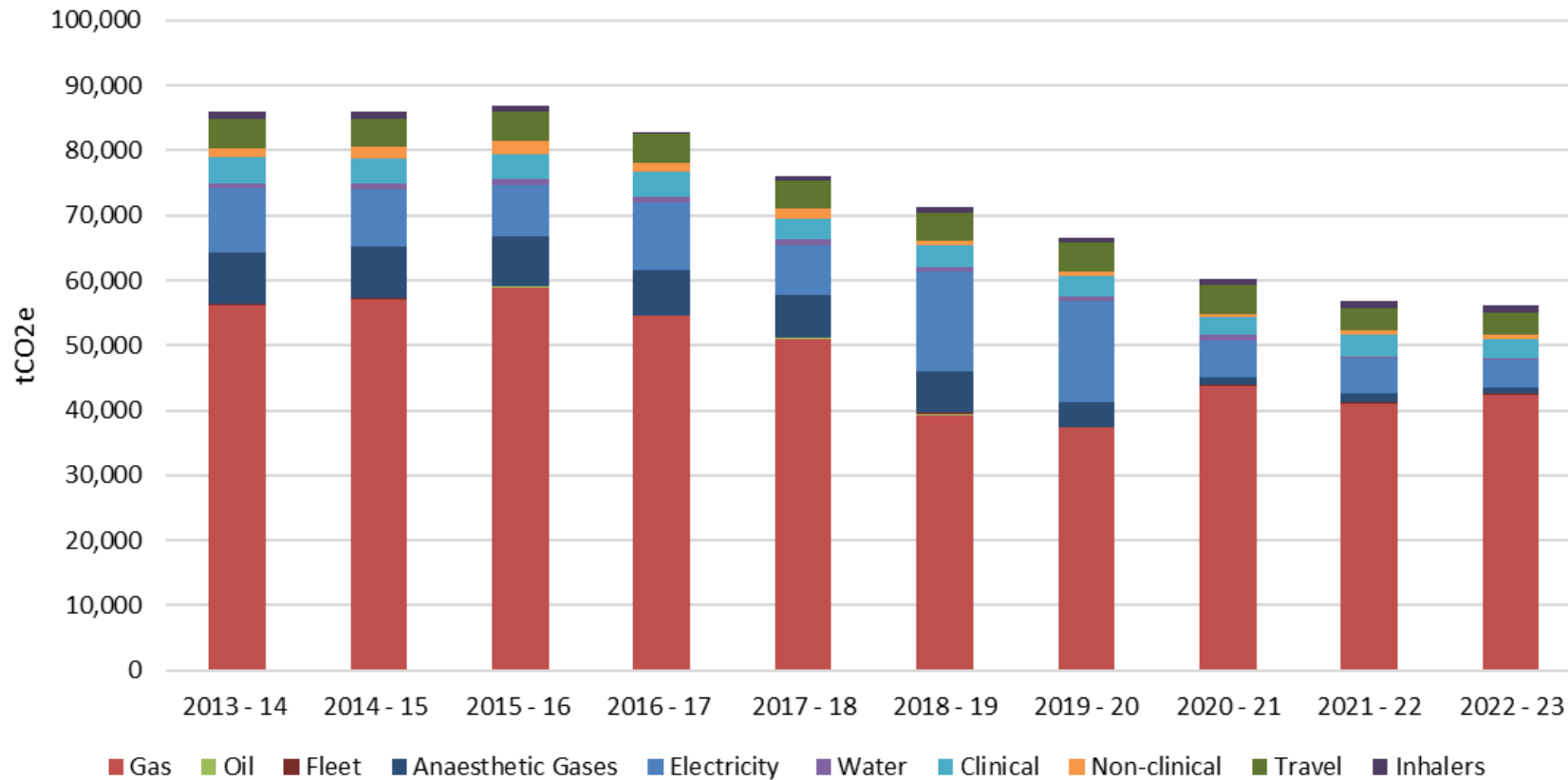
In 2020 the NHS became the first healthcare system in the world to commit to reaching net-zero.

- **NHS Carbon Footprint:** for the emissions we control directly, net zero by 2040.
- **NHS Carbon Footprint Plus:** for the emissions we can influence, net zero by 2045.



LTHT Carbon Footprint

LTHT Total Annual Emissions tCO2e



LTHT Carbon Footprint:

**56,559
tCO2e**

LTHT Scope 3 emissions:

**277,138
tCO2e**

Sustainability at LTHT

WRM Make it Possible

NHS
The Leeds
Teaching Hospitals
NHS Trust

We aspire to become...
...**one of the UK's greenest NHS Trusts.**

Key workstreams:

1. Workforce, System Leadership & Partnerships
2. Sustainable Models of Care
3. Digital Transformation
4. Travel & Transport
5. Estates & Facilities
6. Biodiversity & Greenspaces
7. Medicines
8. Supply Chain & Procurement
9. Food & Nutrition
10. Adaptation

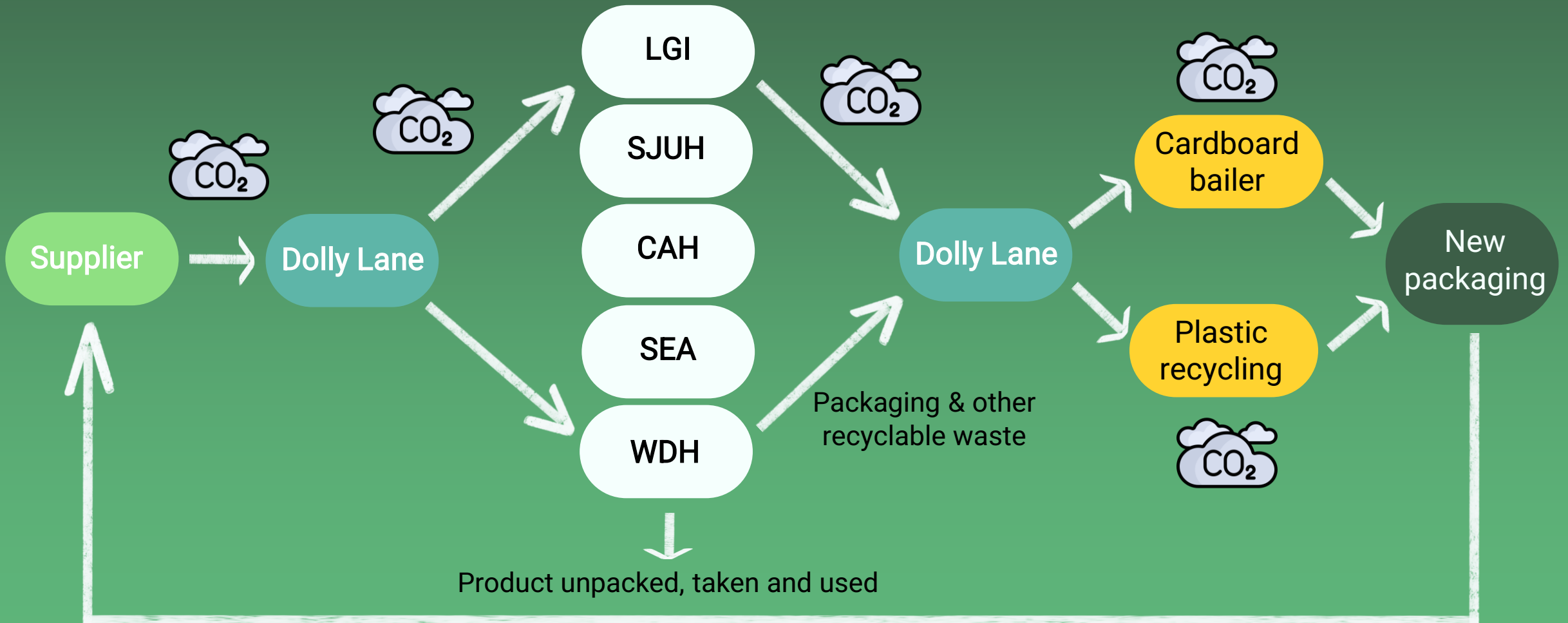


The Dolly Lane Project

- Centralised warehouse for courier deliveries of medical / non-medical items.
- Consolidated deliveries from 5 Trust sites to 1 central hub.
- Trust EVs transport items to hospital sites, and packaging waste from the sites.
- Recycling facilities turn cardboard and plastic waste into blocks to be re-used for new packaging.



Lifecycle Analysis



The Carbon Assessment

Courier deliveries

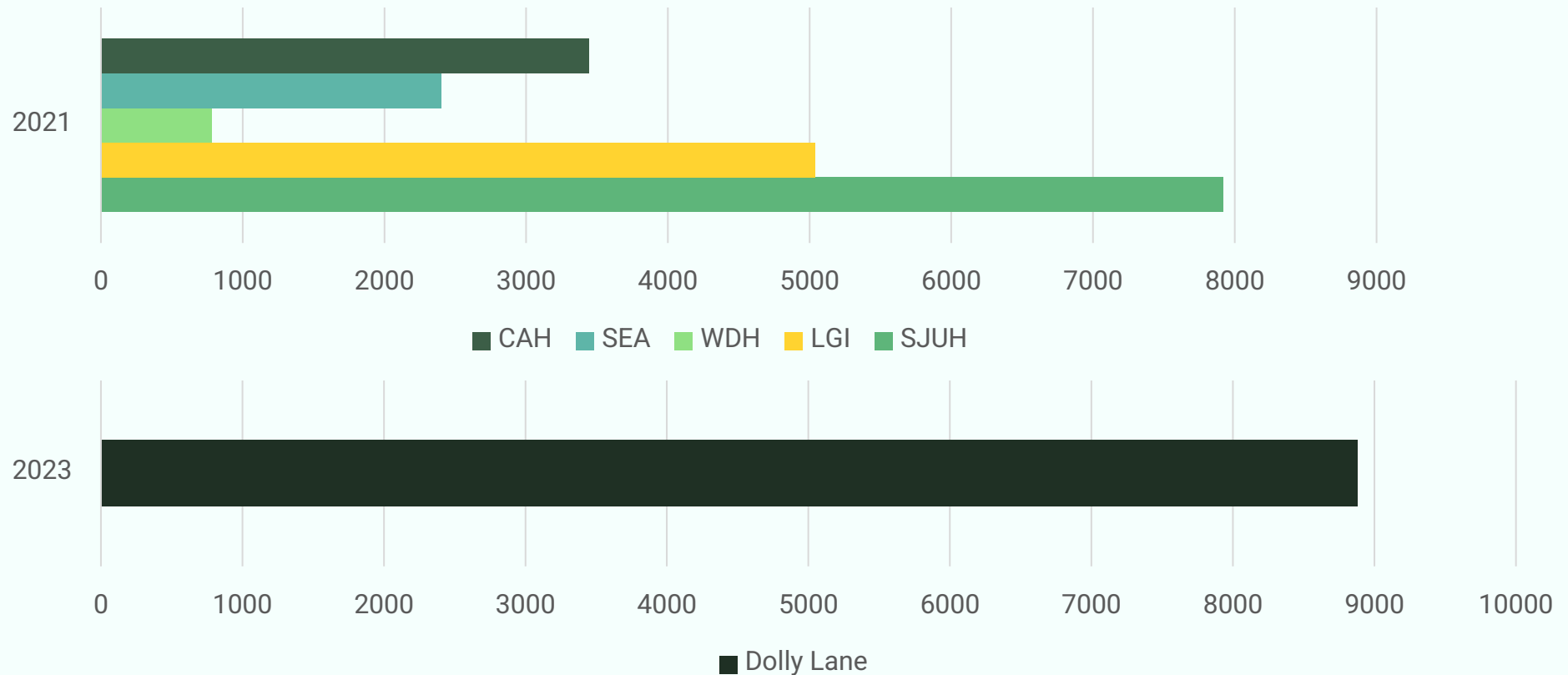
5 diesel vans vs one 7.5 tonne truck

Carbon factor based on different fuel types (petrol, diesel, EV)

Assumed 10-mile delivery distance

2021: 99.82 tCO₂e
2023: 45.27 tCO₂e

Couriers per annum



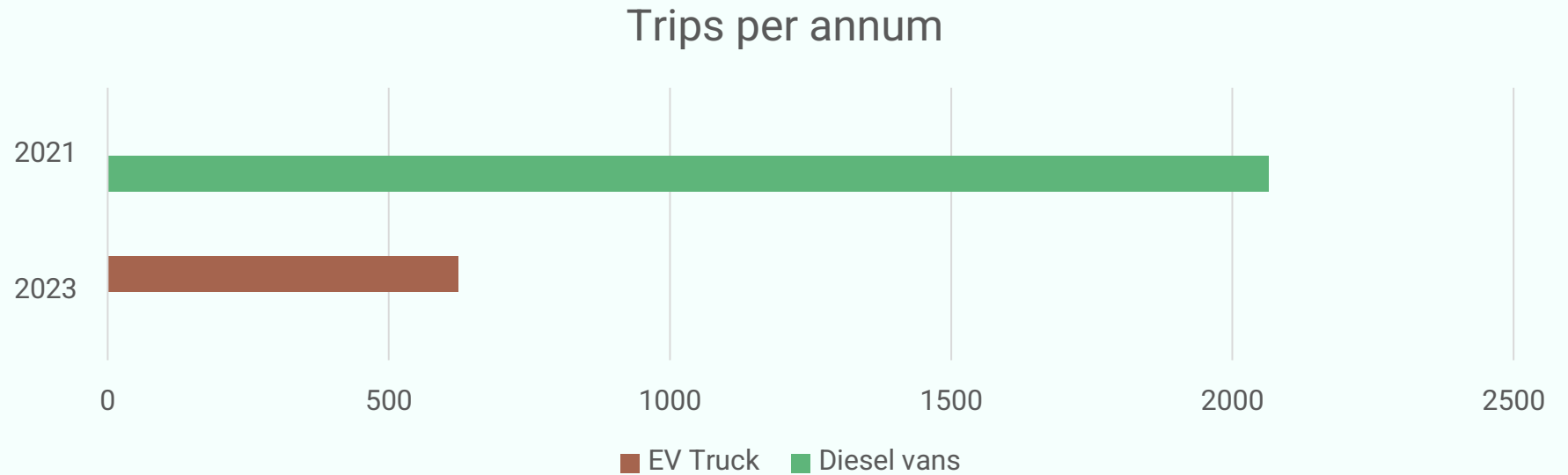
The Carbon Assessment

Internal transport

Diesel vans vs 18 tonne EV truck

Assumed 1-mile delivery distance

2021: 8.6 tCO₂e
2023: 0.49 tCO₂e



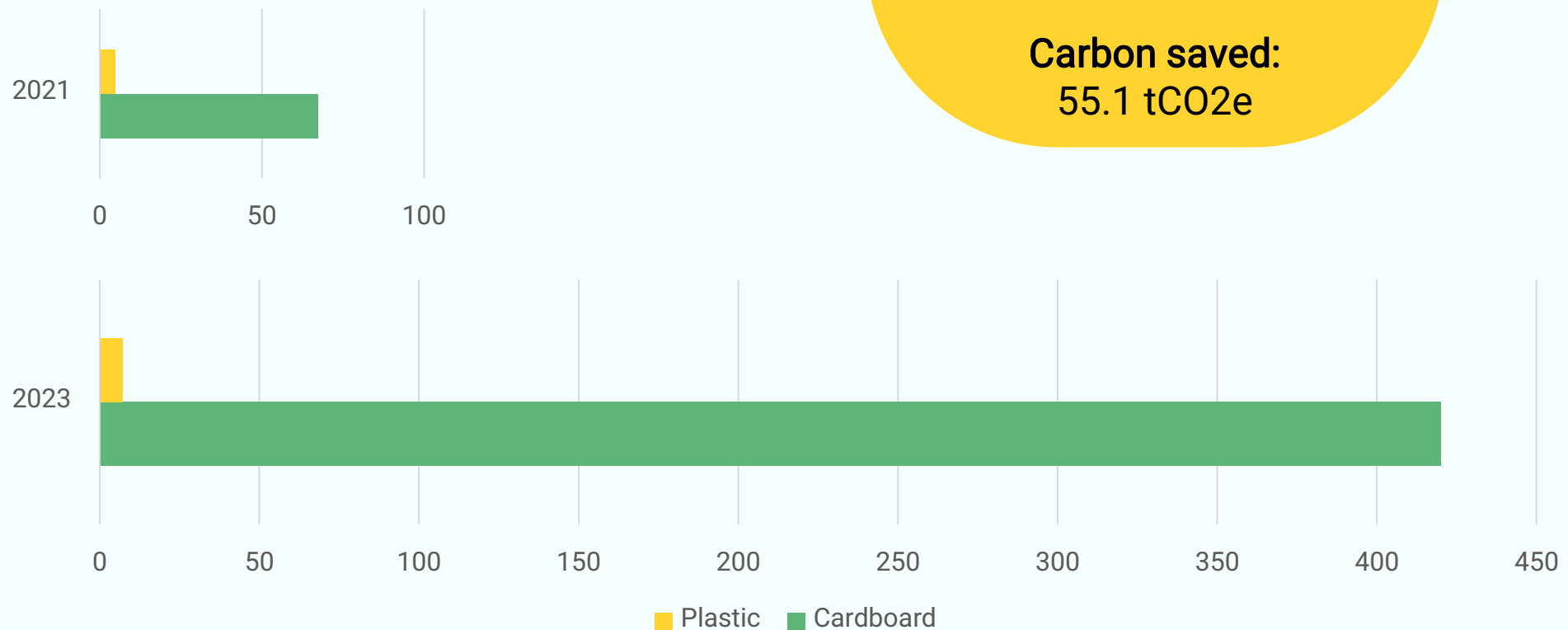
The Carbon Assessment

Waste treatment

Closed-loop recycling
carbon factor for
cardboard & plastic
waste types

2021: 1.53 tCO₂e
2023: 9.09 tCO₂e

Tonnes waste
recycled per annum



Total CO₂e Impact

2021 – 109.95 tCO₂e
2023 – 54.85 tCO₂e

Carbon saved:
55.1 tCO₂e

Questions?

How WRM can help your organisation...

**Carbon
Footprints**

Green Plans

**Sustainability
Management**

**Carbon Literacy
training**

**Carbon &
Lifecycle
Assessments**

ESG Strategy

**Management
Systems**

**Carbon
Reduction Plans**